



**4 Bed  
House - Terraced  
located in**

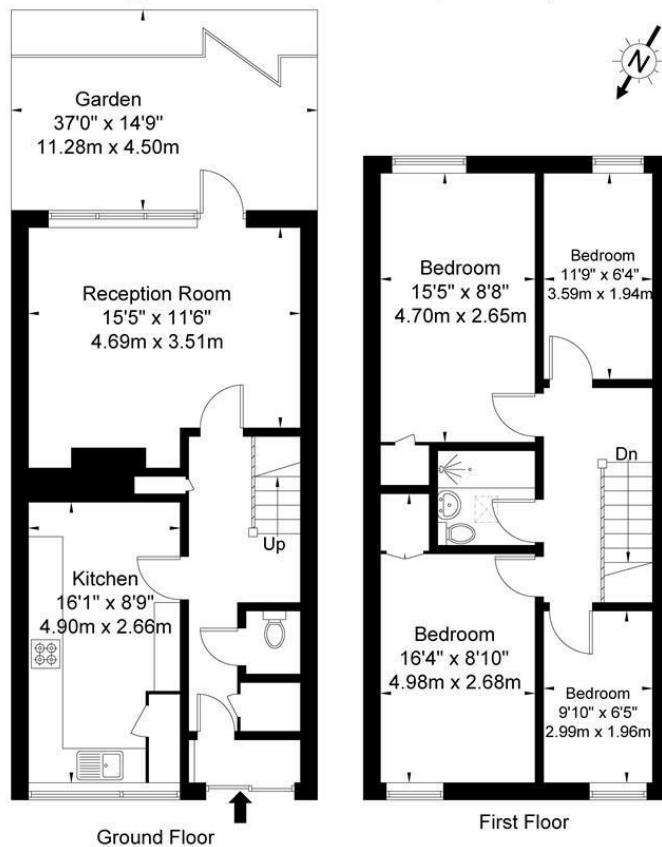
**£2,700 Per Month**



ORLANDO REID

# Cottage Grove SW9 9NQ

Approx Gross Internal Area = 96.7 sq m / 1040 sq ft



Ref

Copyright

**B L E U  
P L A N**

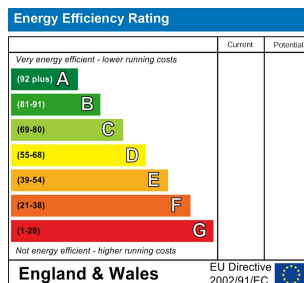
The Floor plan is not to scale and measurements and areas shown are approximate and therefore should be used for illustrative purposes only. The plan has been prepared in accordance with the RICS code of Measuring Practice and whilst we have confidence in the information produced it must not be relied on. If there is any aspect of particular importance, you should carry out or commission your own inspection of the property.  
Copyright @ BLEUPLAN

## DIRECTIONS

## CONTACT

1-3 Old Town  
Clapham  
London  
SW4 0JT

E: [lettings@orlandoreid.co.uk](mailto:lettings@orlandoreid.co.uk)  
T: 020 7627 3197  
[www.orlandoreid.co.uk](http://www.orlandoreid.co.uk)



ORLANDO REID